



GUILDFORD
B O R O U G H

James Whiteman
Managing Director

www.guildford.gov.uk

Dear Councillor

PLANNING COMMITTEE - WEDNESDAY 28TH APRIL 2021

Please find attached the following:

Agenda No Item

7. **Presentation (Pages 1 - 12)**

Yours sincerely

Sophie Butcher, Democratic Services Officer

Encs

This page is intentionally left blank

20/P/01271

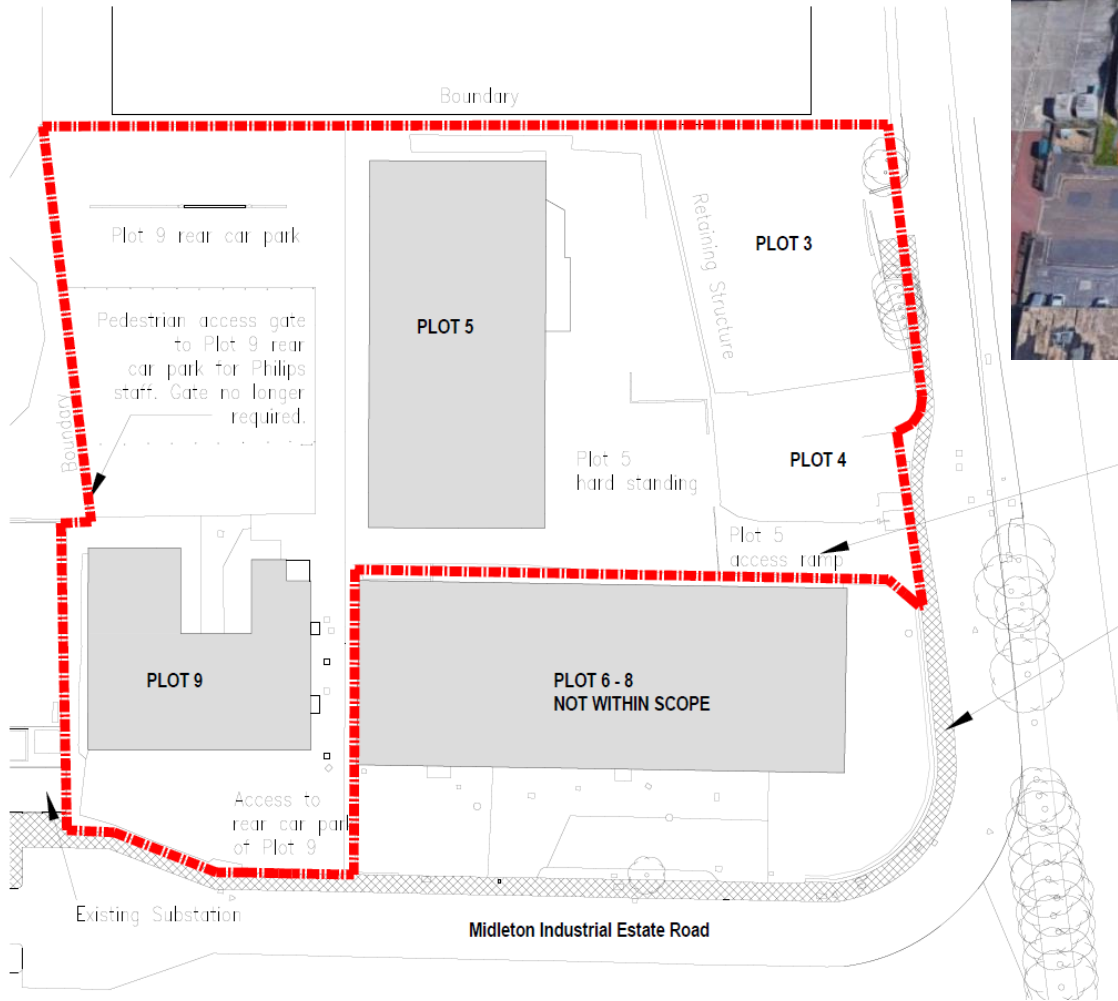
**3, 4, 5 & 9 Midleton Industrial Estate Road
Guildford
GU2 8XW**

[Previous](#)

[Next](#)

[Home](#)





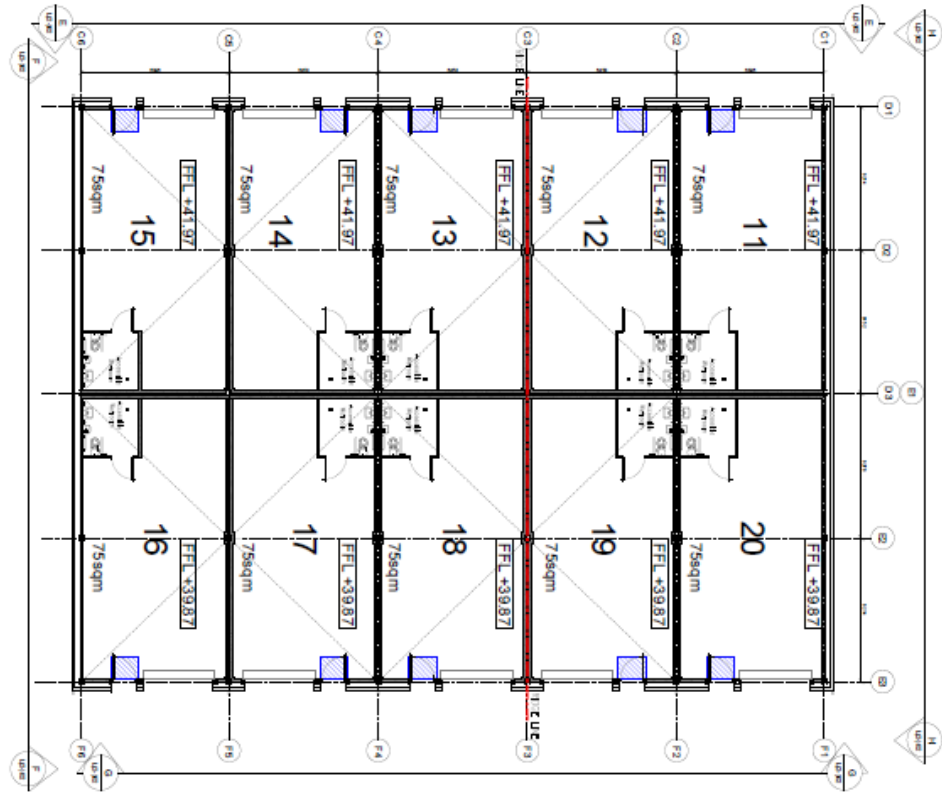
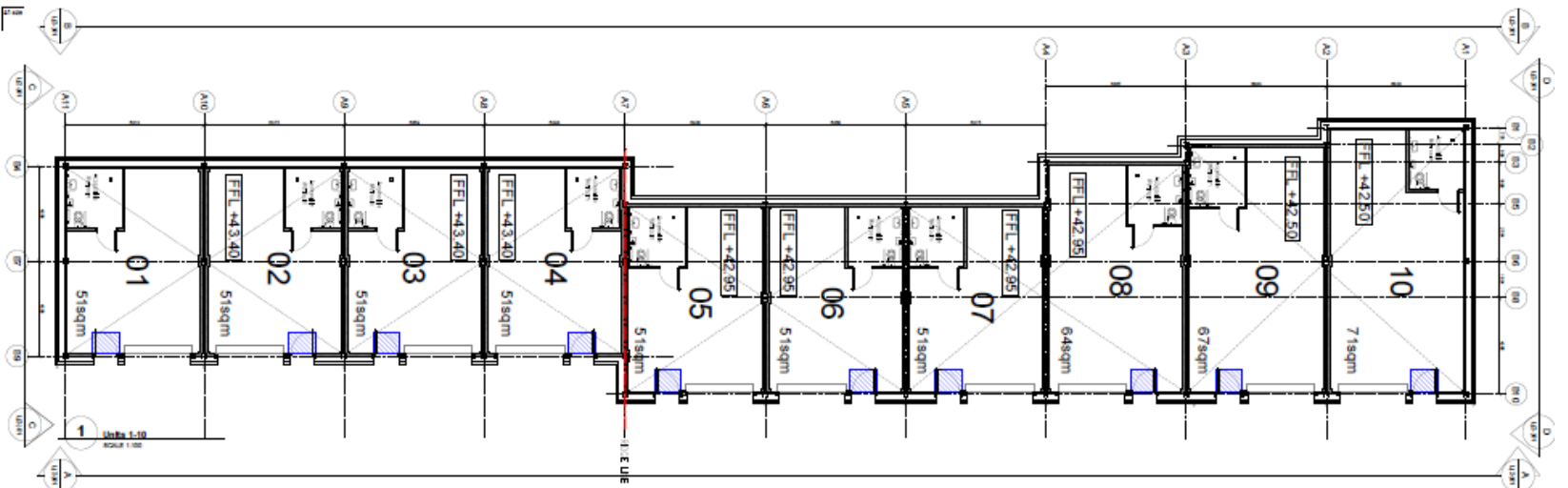
Existing Block Plan

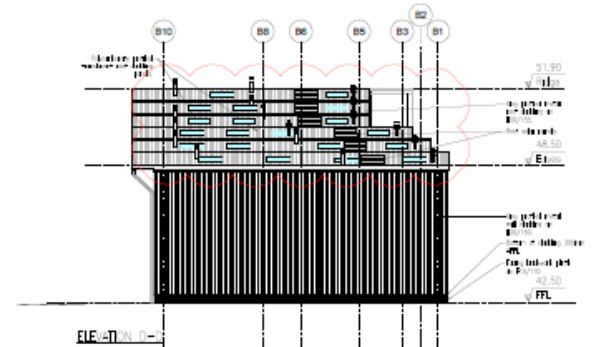
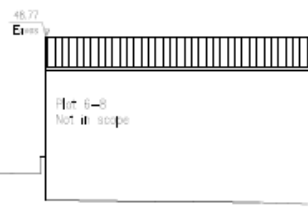
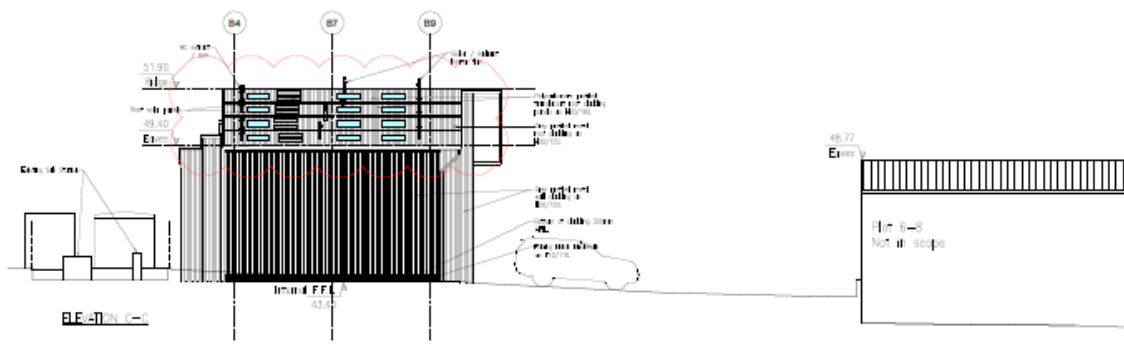
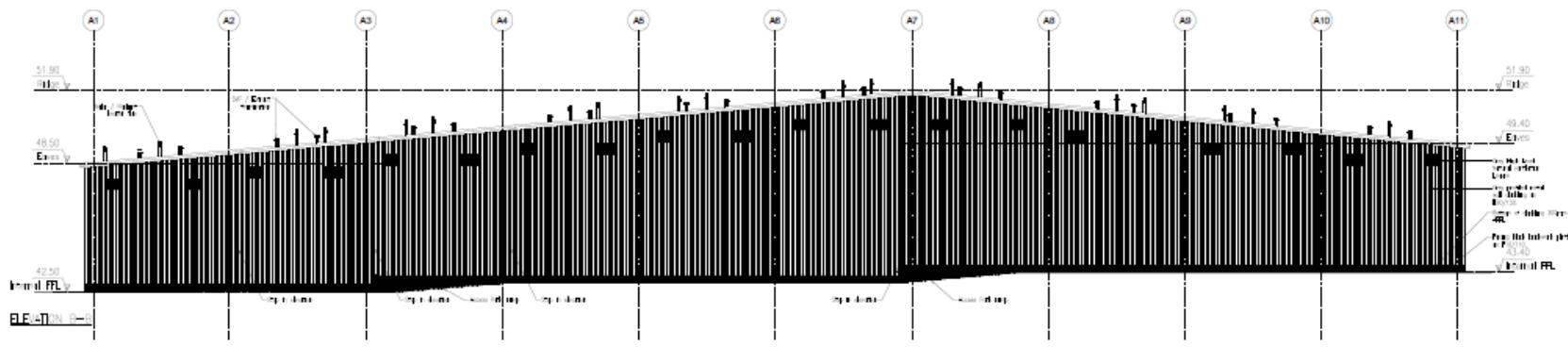
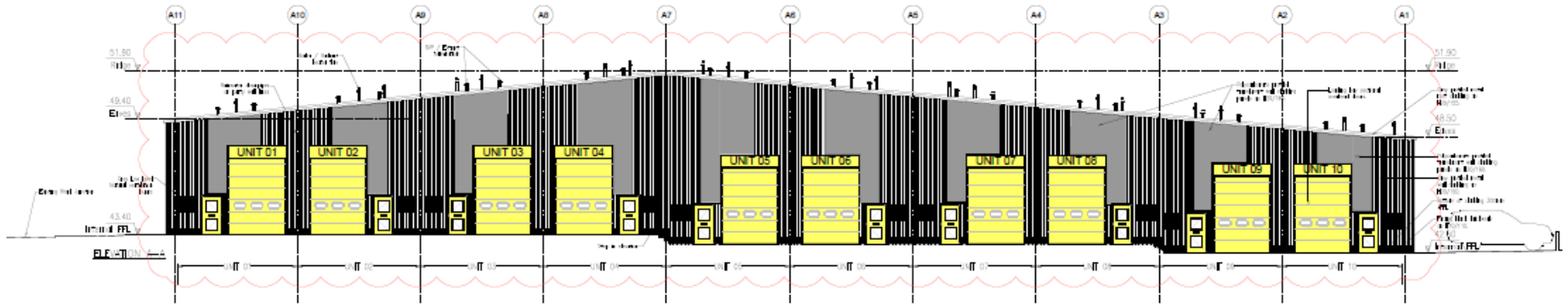
[Previous](#)

[Next](#)

[Home](#)





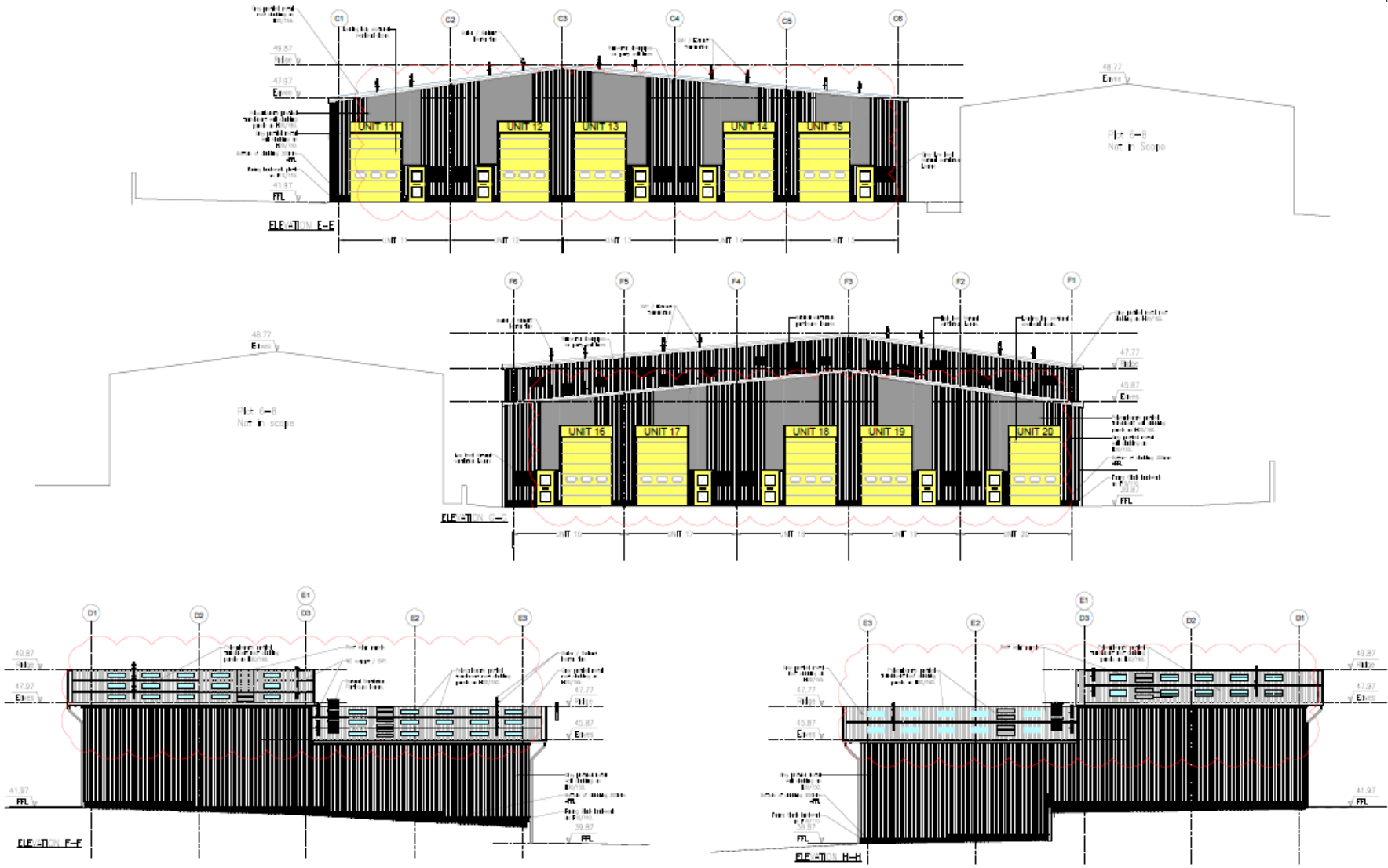


Proposed Elevations Units 01-10

Previous

Next

Home

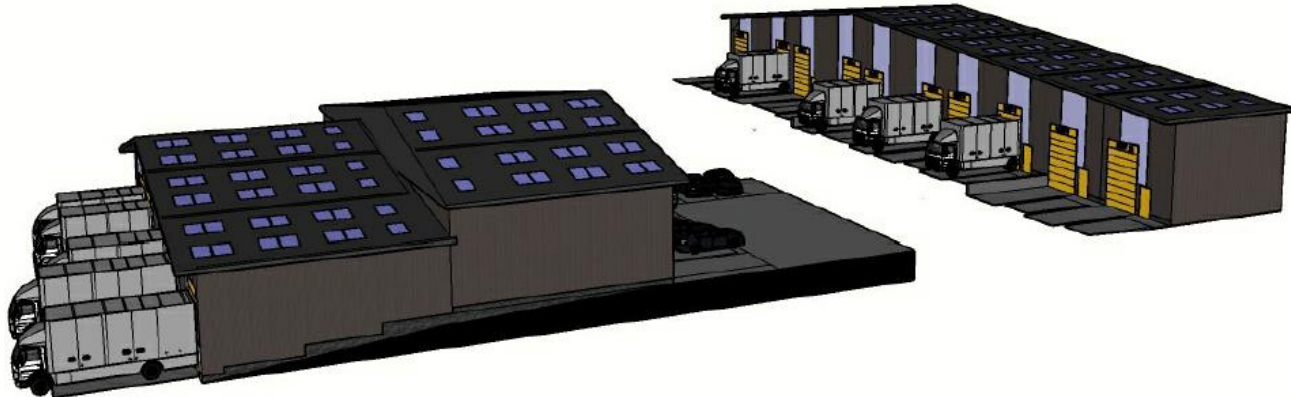
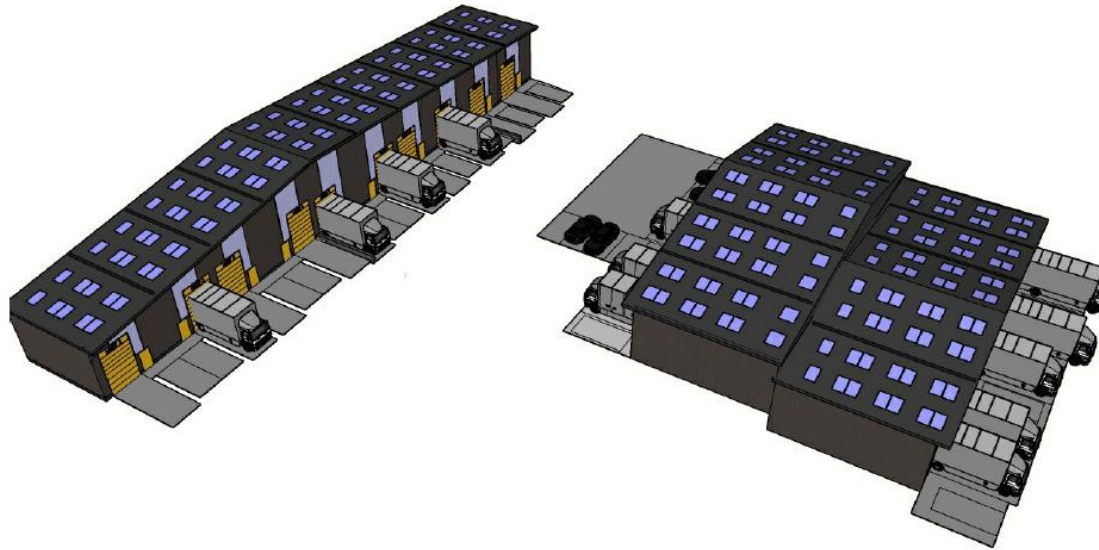


Proposed Elevations Units 11-20

Previous

Next

Home



Indicative Visualisation

[Previous](#)

[Next](#)

[Home](#)



Site Photo

[Previous](#)

[Next](#)

[Home](#)



© Bluesky International Ltd. Ce mapping PLC.

Site Photo



[Previous](#)

[Next](#)

[Home](#)



© BlueSky International Ltd. Celmapping PLC.

Site Photo



Previous

Next

Home

This page is intentionally left blank